

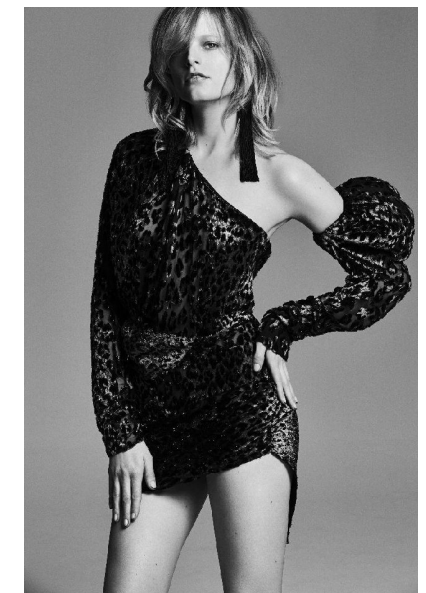


HANNE GABY

Height 173cm/5'8" Bust 81cm/32" Waist 63cm/25" Hips 89cm/35" Dress 8
 AUS/4 US/34 EU Shoe 40 EU/9 US/6.5 UK Hair Blonde Eyes Blue/Green



HANNE GABY ODIELE
 Hanne has discovered a secret trend 15 years ago. The Belgian model Hanne Gaby Odiele has walked away from the runway and into the world of film. She recently, she became a producer, and she's not just a producer of content, she's also a producer of people. She has, over time, with interest, built a team of very talented and very creative people. "I'm not really happy to say that I'm doing anything at all." Compared to her childhood and most of the model world, she has a passion to produce. "Maybe I'll come back from work with a great idea, and I'll be like, 'I'll bring it on for the night.' She says. "She has just about the most glittery eyes that Odiele rocks here? "They're actually darker, so they're super easy to make up!"



PRISCILLAS

SUITE 305/306 | 46a MACLEAY STREET | POTTS POINT NSW 2011 |
 Australia | Tel: 61 2 9332 2422 | Email: women@priscillas.com.au